

Let **UK** Home

**3 Bedrooms**

**Flat**

**Located in London**

**£7,150 Per Month**



[info@letukhome.co.uk](mailto:info@letukhome.co.uk)

<https://www.letukhome.co.uk/>

01795 358 886



# 4B Merchant Square London

W2 1AN



Let UK Home present this brand new three bedroom property in Merchant Square part of the Paddington situated in the heart of West London.

A stunning interior designed apartment with water views, set within the heart of the Paddington Basin and close to the popular West End Quay

It comprises a beautiful reception room with superb views, a modern fully fitted open plan kitchen, three bedrooms, two bathrooms and ample storage space. The apartment is situated on the fourth floor of this prestigious building, which features concierge, lift service, and free and secure underground parking.

The apartment offers easy access to superb transport links such as Paddington Train Station (Elizabeth line, Bakerloo, Hammersmith & City, Circle, District lines and Heathrow Express) Edgware Road (Circle, District and Bakerloo lines).

# 4B Merchant Square London

## £7,150 Per Month



- 4th Floor
- Concierge service
- 24 Hour Emergency Helpline & Service
- Secure underground parking
- Video Entry

- CCTV
- Close to excellent transport links
- Canal views
- Available furnished or unfurnished
- EPC Rating: B



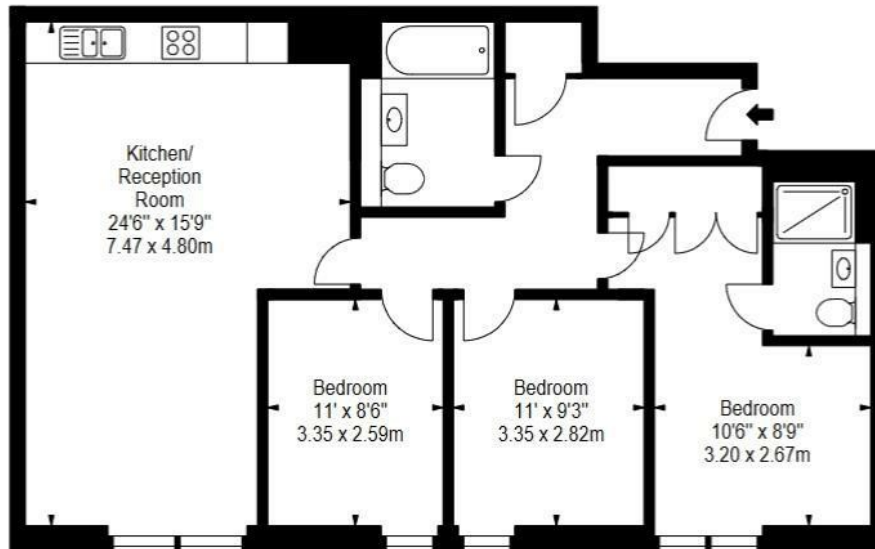


Let **UK** Home

3F 2 Eastbourne Terrace  
Paddington  
London  
W2 6LG

01795 358 886

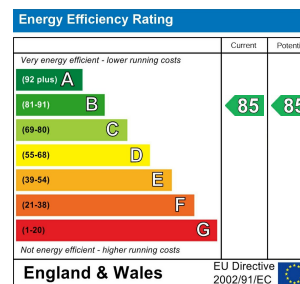
info@letukhome.co.uk



**Council Tax Band: G**

**Local Authority:**

Agents Note: Whilst every care has been taken to prepare these particulars, they are for guidance purposes only. All measurements are approximate and are for general guidance purposes only and whilst every care has been taken to ensure their accuracy, they should not be relied upon and potential buyers/tenants are advised to recheck the measurements.



<https://www.letukhome.co.uk/>